



LM GF BOX (Extreme COLD)



Warning: risk of danger during electrical wiring. Follow the recommendations carefully for each installation.

Explanation of pictographs



Important: refer to instructions



Outside operating temperatures



Keep away from direct sunlight



Earth



Warning: warm surface

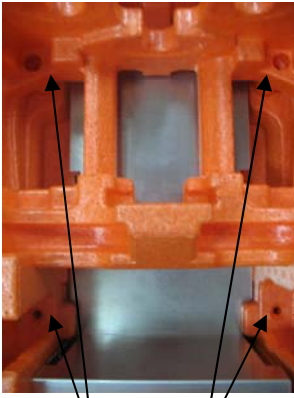
ANTI-FREEZE BOX

Made from thermoplastic polypropylene.
Rigid, shock resistant, waterproof and rotproof.
Inert to aggressive environments (petrochemical, marine, etc.).
IP 54 (LCIE)
Dimensions: H 430 x W 310 x D 205 mm.
Weight: 1.2 kg (1.8 kg with packaging)



The box is fitted with a heating kit that prevents solutions in bottles, aerosols and creams from freezing in temperatures of up to - 40°C, when placed in an unheated room. The kit consists of two earth-connected metal plates and a self-regulating heating cable, comprising a thermostat triggered at 5°C and a cut-out thermostat (55°C) in contact with the metal plates.

PARTS INCLUDED AND INSTALLATION



Fixing holes

- The delivered box includes:
 - a plastic box:
 - a heating kit (110W thermostatic resistor)
 - 1.8 metres of output cable HO5 VVF 3x0.75 mm² pre-connected to the heating kit with 2 poles + 1 earth, without a plug
 - a descriptive panel on the door, a CE sign and a mirror
 - a packet of fixing screws and plugs

- Install the box in an accessible place, close to the risk (if possible away from sunlight):

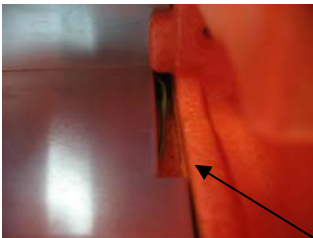


- Install the box at an altitude of under 2000 metres
- Take the products out of the box
- Fix the box using the 4 holes.
(Recommended height of the top of the box: 1.75 m from the ground)
- Wire the box according to the following electrical recommendations:
The box must be connected with an electric installation of 220-240V, protected by a safety system from the short circuit (2A mini) and a differential of sensibility 30mA, in accordance with indications of standard NF C15100.

A disconnecting device shall be provided in the system. It must switch off the active conductors (phase, neutral). It must be close to the equipment and easily accessible.

Be careful: the electric cable must not be put directly on the floor.

- Replace the products in the box
- Close the box using the top handle, checking that the door is properly positioned in order to ensure thermal sealing.



- Maintenance

- Check that the heating kit is still connected to the earth (lower right)
- Check door closure
- Check that the heating kit is operating correctly (giving off heat).
Important: the heating kit will only operate in temperatures of under 5°C.

In the event of a breakdown or operating failure, do not alter or dismantle the heating kit.

The box is designed solely for Prevor products.

Do not use the box for other products or various applications; otherwise the protection of the system can be compromised